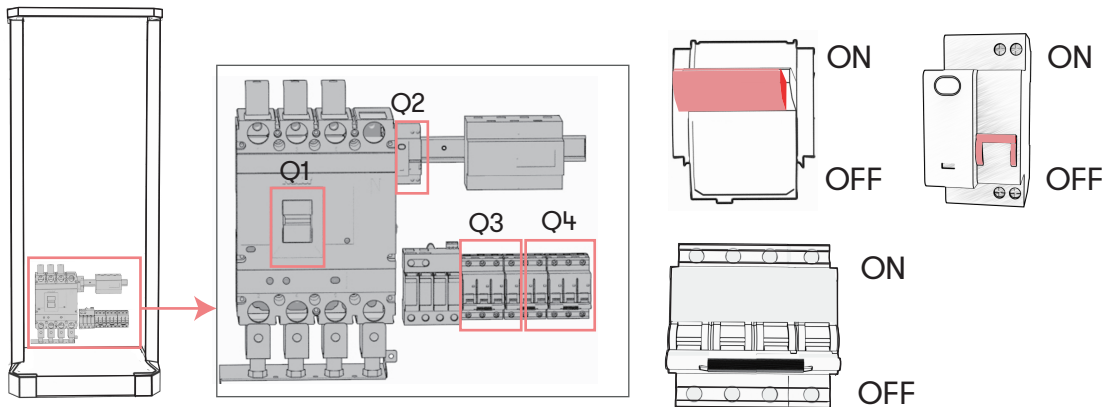


# Charge your vehicle

## A Power on



Turn on the circuit breakers Q1 and Q2 in turn.

If AC connector is configured, Q3 and Q4 also need to be turned on.

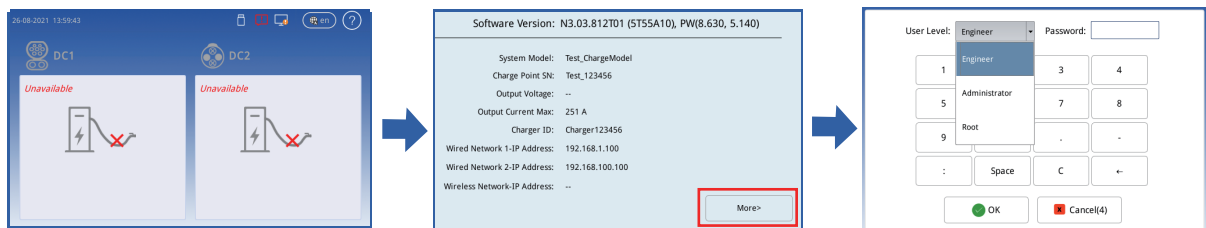


Wait for a few seconds.

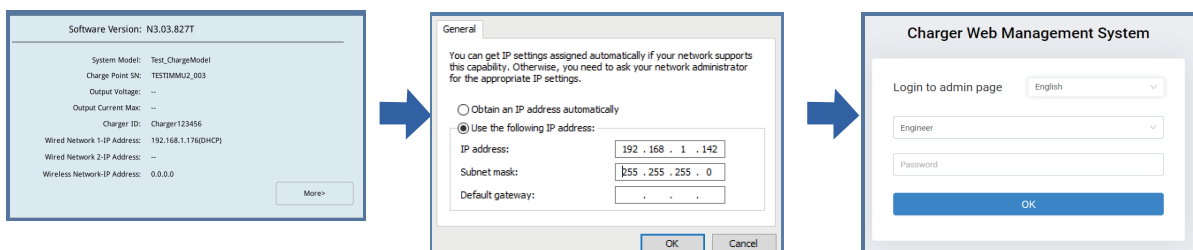
The display will present the logo as shown left.

## B Access to Charger

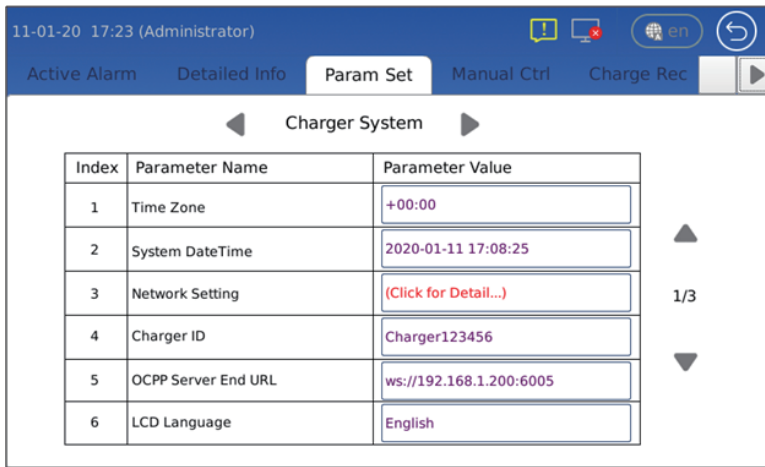
### Login via HMI



### Login via Web



# C Basic Configuration



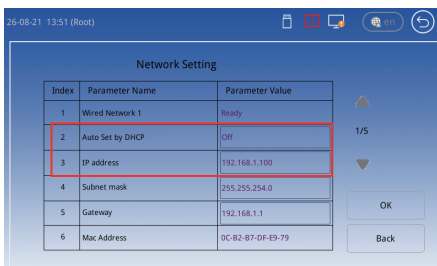
**Time zone:** Please set local time zone immediately. Note this parameter only takes affect via LCD.

**System DateTime:** Local system date time. Please set this along with time zone together.

**LCD Language:** You can change displaying language here.

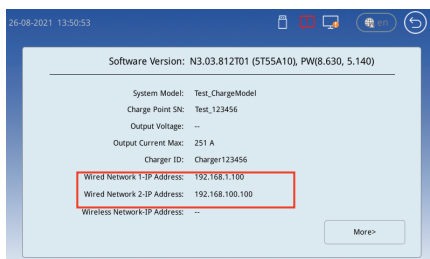
# D Network and OCPP setting

## Configure Wired Network



1. Auto Set by DHCP: on
2. Set IP Address

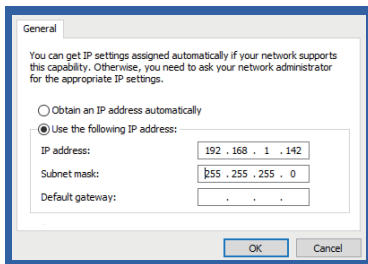
## Configure Network for 4G-Router Connection



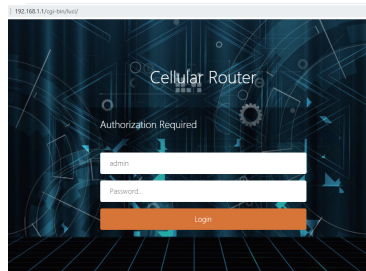
Check the IP address of the upper controller

In most case, you needn't do any further step as charger will get online after getting IP from router.

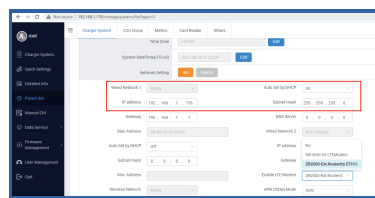
However, if the SIM card does not work well, you need set APN by login to router web page, which is done by connecting Router LAN and PC.



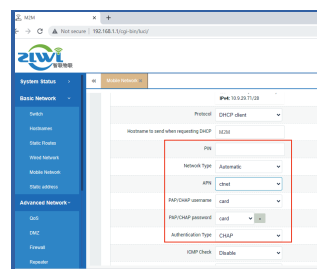
Enter the router web page via IP '192.168.1.X'.



login with account password



Don't forget to move LAN cable from PC to upper controller 'ETH1' and change network setting (recommend to set 'DHCP => On' for 'wired network').



Go to 'Basic Network' -> 'Advanced Network' setting page, and enter your APN /user/password.

## Configure OCPP

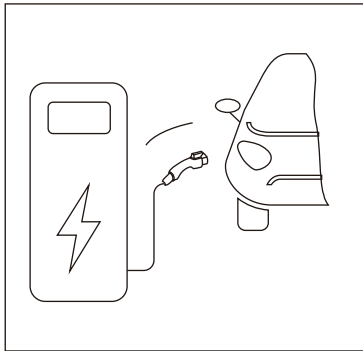
Please get the two parameters from the backend supplier.

Charger ID

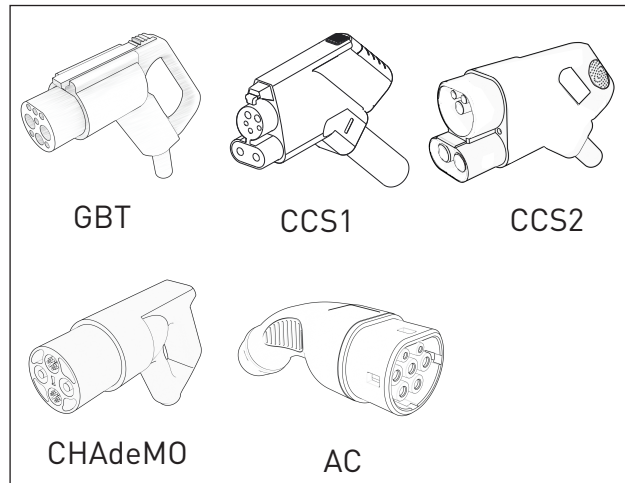
OCPP Server End URL

Example: for a charger with identity "CP001" connecting to a central system with OCPP-J endpoint URL "ws://centralsystem.example.com/ocpp", this would give the following URL: ws://centralsystem.example.com/ocpp/CP001.

## E Unplug connector

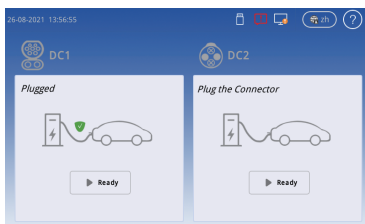


Choose the right connector and unplug it from charger.

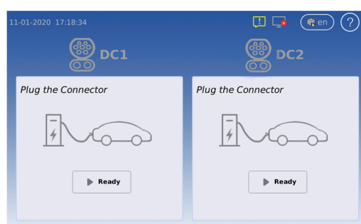


## F Choose Connector and charge vehicle

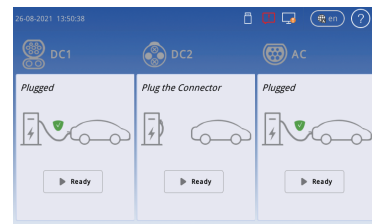
CCS-2 + CHAdeMO



CCS1+CCS1

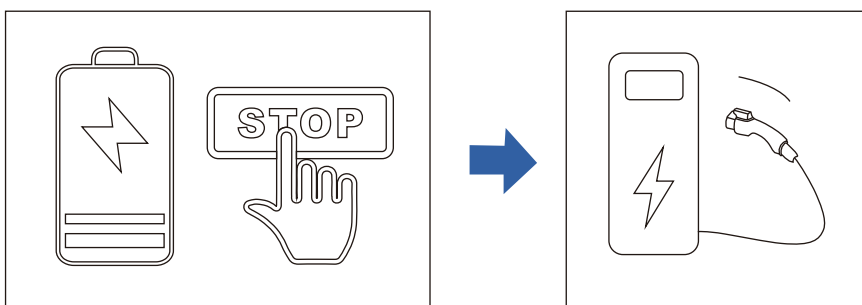


CCS-2 + CHAdeMO +AC Type II



1. Insert the connector into your vehicle socket.
2. Start charging by RFID, OPT, QR Code or remote control.

## G Stop Charging



After the vehicle is fully charged, stop charging first and unplug the connector.

NOTE: If the units are no alarm, broken or damaged, they can be used in "wet weather condition", specifically regarding the connection and disconnection procedure. "